

## NHS Grampian

### Job Description

JOB IDENTIFICATION	
<b>Job Title:</b>	Play Worker
<b>Department(s):</b>	Play Service
<b>Location:</b>	Combined Child Health, Royal Aberdeen Children's Hospital
<b>Hours:</b>	37 hours per week
<b>Contract:</b>	Fixed Term – 11 months
<b>Salary:</b>	Band 3 (£28,011 - £30,230)
<b>Job reference number:</b>	<b>EG233866</b>

## SECTION 2

### Job Purpose

To provide normalising, learning and developmental play for children and young people attending hospital. Either as inpatient's/Out Patients in accordance with their identified needs

To support volunteers to deliver play activities

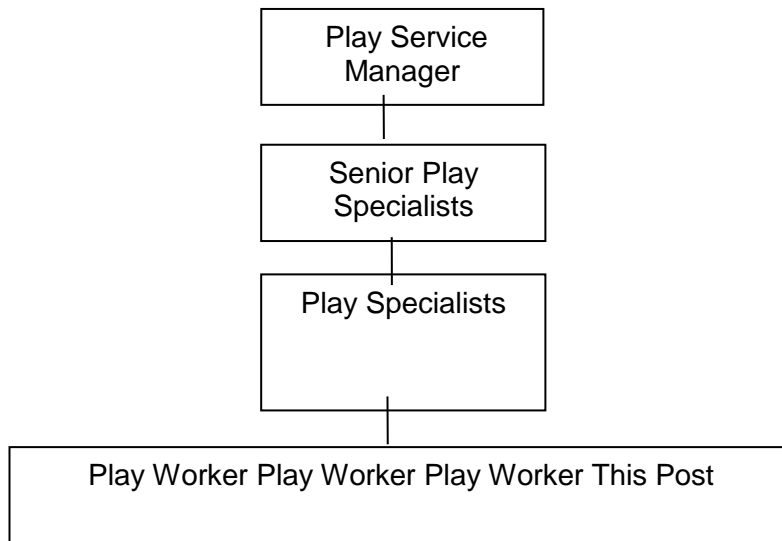
Plan and deliver a programme of age appropriate, inclusive play activities to meet the play needs of patients in your designated area

To provide a safe and welcoming child focussed environment for children and young people engaged in play activities

To provide a sustainable level of safe and age appropriate play materials/equipment for all children and young people

To provide overall support for families and help reduce any negative effects of hospitalisation

### Organisational Chart



1	<p><b>Communication and relationship skills <i>Provide &amp; receive routine information requiring tact or persuasive skills; barriers to understanding</i></b></p> <p>The post-holder will lead daily interactions with the following:  Patients and their families  Clinical staff caring for Children  Other members of the Play Services Team  Students  Volunteers delivering play</p> <p>On a less frequent basis, the post-holder will be expected to interact as follows:  Provide educational presentations relating to play services  Engage with external play / event organisers in the delivery of activities  Engage with senior managers relating to the delivery of play  Members of the media  The Archie Foundation Team</p> <p>There may be situations where understanding maybe difficult due to language difficulties, physical or mental need, and the age of the child.</p>
2	<p><b>Knowledge, training and experience</b></p> <p><b><i>Range of procedures and practices , base level of theoretical knowledge</i></b></p> <p>HNC in childcare and education, NNEB  Proven experience of working professionally with children/Young people as a qualified play provider for a minimum of 2 years  Knowledge of Child Protection policies and procedures  Experience of working with children with additional needs  Experience of providing play in a variety of setting for a variety of ages  Participate statutory and mandatory training as required  Review and reflect on own practice through PDP and appraisals  Willing to work towards Training as a Healthcare Play Specialist</p>
3	<p><b>Analytical and judgemental skills</b></p> <p>The post-holder will work as part of a multi-disciplinary team with the continual support of a Hospital Play Specialist available as required.  Be the nominated lead for activity planning supporting play support workers  Liaise with and take direction from Play Specialists  Prioritise patient work-load and support play volunteers in provision of activities. Deal with delegated tasks from Play Specialist team  Prioritise and assess what duties to respond to first</p>
4	<p><b>Planning and organisational skills</b></p> <p>Organises own day to day activities and oversees the activities provided by play volunteers  Planning and organisation of straight forward tasks, activities or programmes, some of which might be ongoing.</p>

	<p>Plan activities and workload for patients taking into account the clinical and emotional needs of patients</p> <p>Support Play workers and advise them on provision of play</p> <p>Play tasks for play volunteers</p>
<b>5</b>	<p><b>Physical Skills</b></p> <p>Post holder requires ability and knowledge of standard skills to use information technology to operate systems such as email, excel and word.</p> <p>Hand eye co-ordination for moving beds, wheelchairs in a confined space</p>
<b>6</b>	<p><b>Responsibilities for patient/client care</b></p> <p>Implement Play Programmes and activities within clinical settings</p> <p>Undertakes play provision to meet patients overall needs</p> <p>Support and advised families on meeting patients' needs</p> <p>Ensure that the Play Room and activities areas are stocked, visibly attractive for children and young people and invites attendance.</p> <p>Deliver a programme of age-appropriate activities to both mobile and non-mobile advising MDT to deliver care for</p> <p>Children on a daily basis, ensuring that each child within your designated area is aware and has the opportunity to access play at a time that suits them.</p> <p>On a daily basis liaise with the Clinical Team caring for Children in Hospital.</p> <p>Participate in a mini-ward round that identifies those children who may require play support, advise play volunteers accordingly</p> <p>Regularly engage with children and young people with regards to the planning and preparation of activities.</p> <p>Ensure that play volunteers and play workers deliver age appropriate play conforms to Health and Safety and Infection Control requirements.</p> <p>Assist designated play staff and areas in ensuring any local, national or international festivities are recognised in conjunction with volunteer and events services.</p> <p>Adhere to NHSG policies and procedures</p> <p>Provide directed goal orientated play sessions for long term patients</p> <p>Aware of own role and role of Play Volunteers in Child Protection</p> <p>To ensure that up to date written records and activity data are maintained in accordance with Professional and Trust standards.</p> <p>To comply with the National Association Health Play Specialists Code of Professional Conduct.</p>
<b>7</b>	<p><b>Responsibilities for policy and service development implementation</b></p> <p>Follow policies in own role, ensures play volunteers follow relevant polices. May be involved in gaining view of families to help develop services, involved in basic audit and patient surveys</p>
<b>8</b>	<p><b>Responsibilities for financial and physical resources</b></p> <p>Post holder may deal with donations of equipment or finance.</p>

	<p>Responsible for equipment and ensures others make responsible use of equipment and resources.</p> <p>Handles patients possessions such as computers, ipads etc.</p>
<b>9</b>	<p><b>Responsibilities for human resources</b></p> <p>Demonstrated own duties to new less experienced employees.          Demonstrates and supports new staff in indication and orientation          Supports and directs play volunteers and students.          Orientation of visiting activities, entertainers          Involved in professional development of play support workers</p>
<b>10</b>	<p><b>Responsibilities for information resources</b></p> <p>Record play related data, record personally generated information, may contribute to patient records under the supervision of play specialist or staff nurse</p>
<b>11</b>	<p><b>Responsibilities for research and development</b></p> <p>Undertake surveys and audits May take part in surveys, audits, gaining patient views, research and development</p>
<b>12</b>	<p><b>Freedom to act</b></p> <p>Works to standard operating procedures, acts on own initiative in delivering patients play activities, will support play support workers to ensure they adhere to operating procedures. Play worker has Play specialists for reference and direction</p>
<b>13</b>	<p><b>Physical Effort</b></p> <p>Move and handle patients on a daily basis.          Move and handle large and small pieces of equipment          Clean and maintain large and small items of stock daily          Set up playroom on a daily basis and clear away.</p> <p>These activities will be frequent and of moderate effort for short periods</p>
<b>14</b>	<p><b>Mental effort</b></p> <p>Frequent concentration, concentration required to support patients in a clinical setting, concentration required to engage with and motivate patients.</p>
<b>15</b>	<p><b>Emotional effort</b></p> <p>Ability to work in distressing and emotional circumstances on a frequent basis.          Work with patients and their families who have a wide range of illnesses and conditions, some of whom may be terminally ill or have severe disabilities.          Provide support to families under stress.          Provide support to students and volunteers          Children and young people will express themselves through play</p>

	activities and play worker must help patients process information and feelings
16	<b>Working conditions</b> Frequent unpleasant conditions, smell, noise, aggressive and emotional patients and families, occasional vomit, body fluids,

**PERSON SPECIFICATION**

**POST/GRADE:** Play Worker Band 3

**LOCATION:** Combined Child Health – Royal Aberdeen Children’s Hospital

**WARD/DEPARTMENT:** Play Service

The Person Specification should meet the demands of the job and comply with current legislation. Setting unnecessary standards may, for example, unfairly discriminate against one sex, the disabled or minority racial groups. Applicants should be assessed in relation to their ability to meet the real requirements of the job as laid down in the job description. With the exceptions relating to displaced and disabled candidates noted in Sections 5.3 and 5.4 of this policy, shortlisted candidates must possess all the essential components as detailed below.

**GENERAL REQUIREMENTS**

<b>Factor</b>	<u>Essential</u>	<u>Desirable</u>
Qualification & Experience	HNC Childhood Practice/ SVQ Level 3 Childcare and Education SVQ Social Services (Children and Young People) at SCQF Level 7/ Previous post qualifying experience working as a qualified Play Provider Experience of providing play in variety of settings for all ages Demonstrate an ability to adapt to an frequently changing environment Evidence of continuing professional development	Youth work experience/Qualification Experience of working with children with Additional Needs  Food Handling qualification Risk Assessment
Circumstances & flexibility	Willing to work varying day shift patterns to cover the needs of the service	
Particular requirements of the post	Willing to participate in extra-curricular activities e.g study/training days	Willingness and to undertake Foundation degree in Healthcare Play Specialism /Entrance qualifications for Course if required
Level of Disclosure check required	Enhanced PVG	

