

NHS Grampian

Job Description

Job Title:	Research/Follow-up Nurse
Department(s):	Critical Care - Intensive Therapy Unit
Location:	Aberdeen Royal Infirmary
Hours	33.75 hours per week
Band / Salary:	Band 6 (£41,608 - £50,702 per annum pro rata)
Contract:	Permanent
Job Reference:	CI238522

Job Purpose

Follow-Up:

To support discharges and provide highly specialist advice, education and support to ward based staff of all grades. Enhancing clinical nursing care at ward level for critically ill patients discharged from the Intensive Therapy Unit. To support patients and relatives with their recovery after their Intensive care admission.

The Follow-Up nurses visit all the General ITU patients (regardless of length of stay) and all the Cardiac ITU patients (greater than >24 hours ITU stay) once discharged to the ward. Each visit lasts around 30 minutes although variable to individual patient needs.

Research:

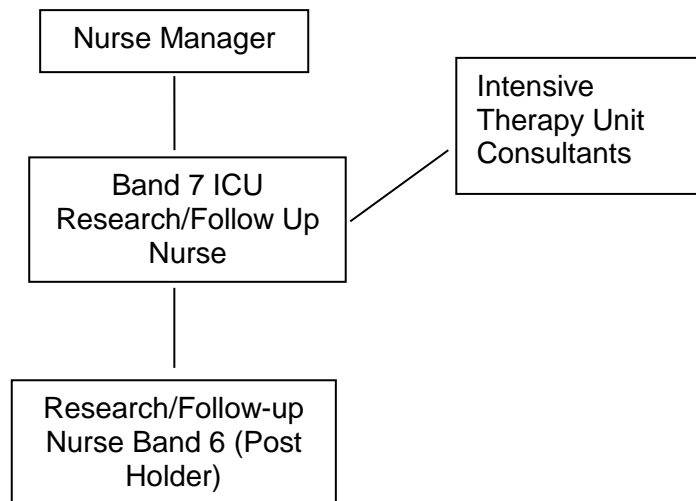
To undertake, develop, support and participate in both nursing and medical research projects undertaken within the Intensive Therapy Unit, and to educate staff about the research process and on any research projects in progress on the unit.

Audit

Work as part of a team to ensure audit data collection is carried out and feedback to the Scottish Intensive Care Society Audit group. Assist in data collection for other ongoing or new audits as required and liase with other centres to provide and gather data.

The post holder will also work on the Intensive Care unit on occasions as an Intensive Care nurse as both services allow and dependent on which service requires priority.

Organisational Chart



<p>1</p>	<p>Communication and relationship skills</p> <p>Involvement in education programmes that support ward nurses in obtaining a greater understanding of the specialist care needs of critically ill patients within the ward setting.</p> <p>Communicate with all members of the multi-disciplinary team regarding the highly complex and often very sensitive care of patients whilst on the ITU and the ward e.g. patient has suffered a bad burn, lost a limb, a failed suicide attempt, is terminally ill.</p> <p>Frequent dealing with patients who are critically ill and asking them (if they are conscious) or their relatives for consent in a research study.</p> <p>As a professional with a high degree of autonomy it is sometimes necessary to question the practice of other professionals, when patient care needs are not being met. Examples of this include if a patient is not being positioned correctly on the ward environment or they need more frequent suctioning of a tracheostomy or their physical observations necessitate a change of care and a new treatment initiated.</p> <p>Following-Up patients from the ITU aims to ensure that they continue to receive the specialist care they require to aid and speed their recovery. Doing this requires experience, motivation and diplomacy on a daily basis.</p>
<p>2</p>	<p>Knowledge, training and experience</p> <p>Working at degree plus diploma level specialist training level equivalent.</p> <p>Post holder must have worked as a registered nurse in ITU for 3 years.</p>
<p>3</p>	<p>Analytical and judgemental skills</p> <p>To prevent, preventable re-admissions to the ITU by providing specialist support and education to ward staff of all grades, regarding the specialist care needs of discharged ITU patients and assisting ward staff to develop the required level of critical care skills to care for these patients.</p> <p>To assess and identify patients whose condition has deteriorated since ITU discharge, ensuring that the patient receives the appropriate level and skill of nursing care on the ward. If re-admission is required this is coordinated and therefore admission occurs at the appropriate time.</p> <p>In collaboration with members of the Multi-Disciplinary Team assist nursing staff to recognise 'at risk' patients within the ward environment through the use of Early Warning Scoring Charts to facilitate early intervention where a higher level of care is required.</p> <p>To be able to assess and interpret the clinical condition of patients discharged from</p>

	the Intensive Therapy Unit and to ensure that the specialist care needs of these patient's are implemented.
4	<p>Planning and organisational skills</p> <p>Post holder will organise own specialist workload.</p>
5	<p>Physical Skills</p> <p>Frequent taking of blood samples, administration of intravenous injections and infusions.</p> <p>Daily dexterity and skills required for setting up and using highly technical equipment, often when urgency is required.</p>
6	<p>Responsibilities for patient/client care</p> <p>Function as specialist nursing practitioner providing highly specialised clinical advice to patients and their families, related to their care and recovery post intensive care.</p> <p>To be able to assess and interpret the clinical condition of patients discharged from the Intensive Therapy Unit and to ensure that the specialist care needs of these patient's are implemented.</p>
7	<p>Responsibilities for policy and service development implementation</p> <p>The post holder will propose changes to practice e.g. care of tracheostomies on the ward environment and will contribute to the development of specialist protocols (All ITU protocols are updated every year and the post holder will be involved with this).</p>
8	<p>Responsibilities for financial and physical resources</p> <p>The post holder will have a personal duty of care when using equipment.</p>
9	<p>Responsibilities for human resources</p> <p>To act as a point of referral for nursing problems, providing ward nurses of all grades with highly specialist nursing education and sharing intensive care skills re: the management of patients after discharge from the ITU.</p> <p>Train and educate staff on the requirements for monitoring/sampling and data collection.</p>
10	<p>Responsibilities for information resources</p> <p>Collate and disseminate information and data (compiled by others) regarding the incidence of post-discharge/transfer problems and complications.</p> <p>To collate and disseminate information related to patients after ITU discharge with members of the ITU team.</p> <p>Participate in accurate and timely data collection including physiological,</p>

	<p>demographic and pharmacokinetic data (mostly compiled by others).</p> <p>Maintain records of all research activities performed.</p>
<p>11</p>	<p>Responsibilities for research and development</p> <p>To participate in the development and ongoing process of both qualitative and quantitative research studies on the ITU.</p> <p>To independently screen ITU patients for suitability and recruitment to ongoing clinical trials.</p> <p>To keep ITU staff informed, through education and teaching, about the progress of research projects and studies.</p> <p>Obtain informed consent from patient's and relatives involved in research studies/clinical trials.</p> <p>Undertake research interviews of patients and relatives related to research projects.</p> <p>Participate in the preparation of data for presentation and publication.</p> <p>Have a working knowledge of research protocols, procedures and protocol documentation.</p> <p>Provide guidance, support and information for patients and relatives to enhance their understanding of the specific research study.</p>
<p>12</p>	<p>Freedom to act</p> <p>Working independently as a specialist practitioner, managing own caseload, without direct supervision.</p> <p>Within the organisation be identified as a specialist practitioner for the care of patients post Intensive Care.</p> <p>To independently supervise the nursing care delivery to post ITU patients within the ward setting. To provide follow-up visits to all patients after ITU discharge to support their continuing recovery (the number of Follow-Up visits each patient requires will be reviewed on a daily basis, at each visit).</p> <p>Ensuring that patients have all their specialist care needs met in the ward environment is not an easy task. When a patient's condition has deteriorated and on visiting them it is apparent that their necessary care needs, either nursing or medical or both are not being met. It is the responsibility of the ITU Follow-Up nurse to highlight these issues and recommend that an appropriate level of care be introduced.</p>

	To undertake duties without supervision and be self-directed and responsible for time and workload management.
13	Physical effort Occasional requirement for lifting and moving patients and machinery while working on the ITU and when assessing patients on the wards.
14	Mental effort Frequent requirement for concentration e.g. patient assessment.
15	Emotional effort Deals with critically ill patients and their families many times each day e.g. patients with life threatening conditions e.g. Multiorgan failure, major Road Traffic Accidents, terminally ill patients etc
16	Working conditions Occasional exposure to highly unpleasant working conditions e.g. all body fluids, infectious and blood borne diseases e.g. meningitis, tuberculosis, human immunovirus (HIV), acquired immunodeficiency syndrome (AIDS), Hepatitis B and C, while working on the ITU and also when assessing patients in the wards.

PERSON SPECIFICATION

POST/GRADE: FOLLOW UP / RESEARCH NURSE - BAND 6
LOCATION: ABERDEEN ROYAL INFIRMARY
WARD/DEPARTMENT: CRITICAL CARE / GENERAL ICU

GENERAL REQUIREMENTS

<u>Factor</u>	<u>Essential</u>	<u>Desirable</u>
Qualification & Experience	NMC Registration. Extensive ICU Nursing experience.	Post Reg. ICU specific qualification. Educated to Degree Level. A willingness to further academic career
Circumstances & flexibility	Willingness to work flexibly to meet and deliver on Service needs.	
Particular requirements of the post	Excellent communicator. Dynamic and self motivated. Having vision for the future development of the Service.	
Level of Disclosure check required	PVG clearance	