



# NHS Lothian Sites & Services

# Royal Edinburgh Hospital



Situated to the South West of the city with good transport links to the city centre

Available Specialties:

## **PSYCHIATRIC SERVICES**

Dementia

## **SPECIALIST SERVICES**

Child & Adult Mental Health, Intensive Psychiatric Care Unit, Older Peoples Mental Health, Forensic Mental Health, Adult Acute Admissions Acute Inpatient Care, Traumatic Stress and Alcohol & Substance Misuse, Rehabilitation Complex Care

# St John's Hospital



Situated in West Lothian with good public transport links to the City of Edinburgh

Available Specialties:

## **MENTAL HEALTH WARDS**

Older People's Mental Health, Acute In-patient, Intensive Psychiatric Care Unit, Regional Mother and Baby Unit, Regional Eating Disorders Unit, Pentland Court

# Prison Nursing

## HMP Edinburgh



Situated in Edinburgh

## HMP Addiewell



Situated in West Lothian

Available Specialties at both prisons:

Addictions team

# Royal Hospital for Children & Young People



Situated on the south side of Edinburgh on a shared campus with the Royal Infirmary of Edinburgh with good public transport links to the City of Edinburgh

Available Specialties:

**CHILD AND ADOLESCENT MENTAL HEALTH**

CAMHS ID ITS, CAMHS over 12 day service

## Ferryfield House



### Available Specialties:

Functional and Old Age Psychiatry (Dementia)

Ferryfield House is situated in the North of Edinburgh with good transport links to the city centre

## Findlay House



### Available Specialties:

Intermediate Care and Old Age Psychiatry (Dementia)

Findlay House is located in North East Edinburgh, in Leith

# Maple Villa



## Available Specialties:

Older Adults Mental Health unit for males with Dementia



Situated in Craigshill in West Lothian

# Tippethill Hospital



## Available Specialties:

Older Adults Mental Health unit for females with  
Dementia – Rosebury Ward

Situated in Bathgate in West Lothian

# Midlothian Community Hospital



## Available Specialties:

- Dementia Assessment and HBCCC – Penny Lane Ward
- Mental Health Assessment – Rose Lane Ward

Situated to the south-east of Edinburgh in Dalkeith

# Robert Fergusson Unit



Situated to the south west of the city with good transport links to the city centre

## Available Specialties:

The Robert Fergusson Unit at the Royal Edinburgh Hospital focuses on Brain Injury Rehabilitation

# East Lothian Community Hospital



## Available Specialties:

Older Adults Mental Health

Intensive Home Treatment Team

Community Mental Health Team

Substance Misuse Team – Based in Musselburgh



Situated to the east of Edinburgh in Haddington

# Health & Social Care Partnerships



Available Specialties:

EDINBURGH HSCP

WEST LoTHIAN HSCP

MIDLoTHIAN HSCP

EAST LoTHIAN HSCP

There are four Health & Social Care Partnerships within NHS Lothian that provide learning disabilities, adult and older adult community mental health, primary care, thrive and substance use services throughout Edinburgh, West Lothian, Mid & East Lothian

# Edinburgh HSCP Community Mental Health

EHSCP has 4 localities where our Community adult and older adult community mental health, thrive and substance use services are located.

## NW

Craigroyston Health Clinic

NW Locality Office, West Pilton Gardens

## SW

Cambridge Street

Westerhailes Healthy Living Centre

Astley Ainslie Hospital

## NE

Inchkeith House

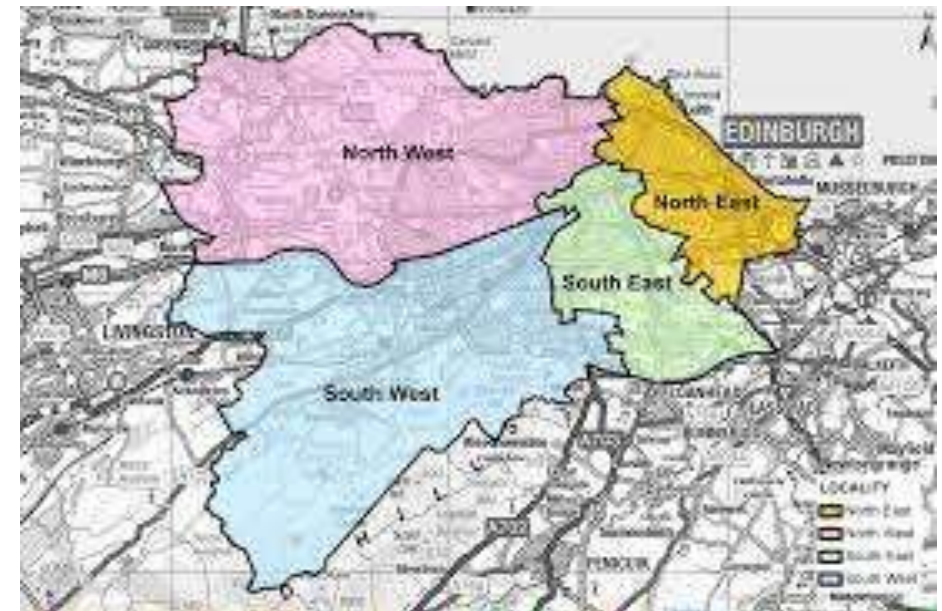
Leith Community Treatment Centre

## SE

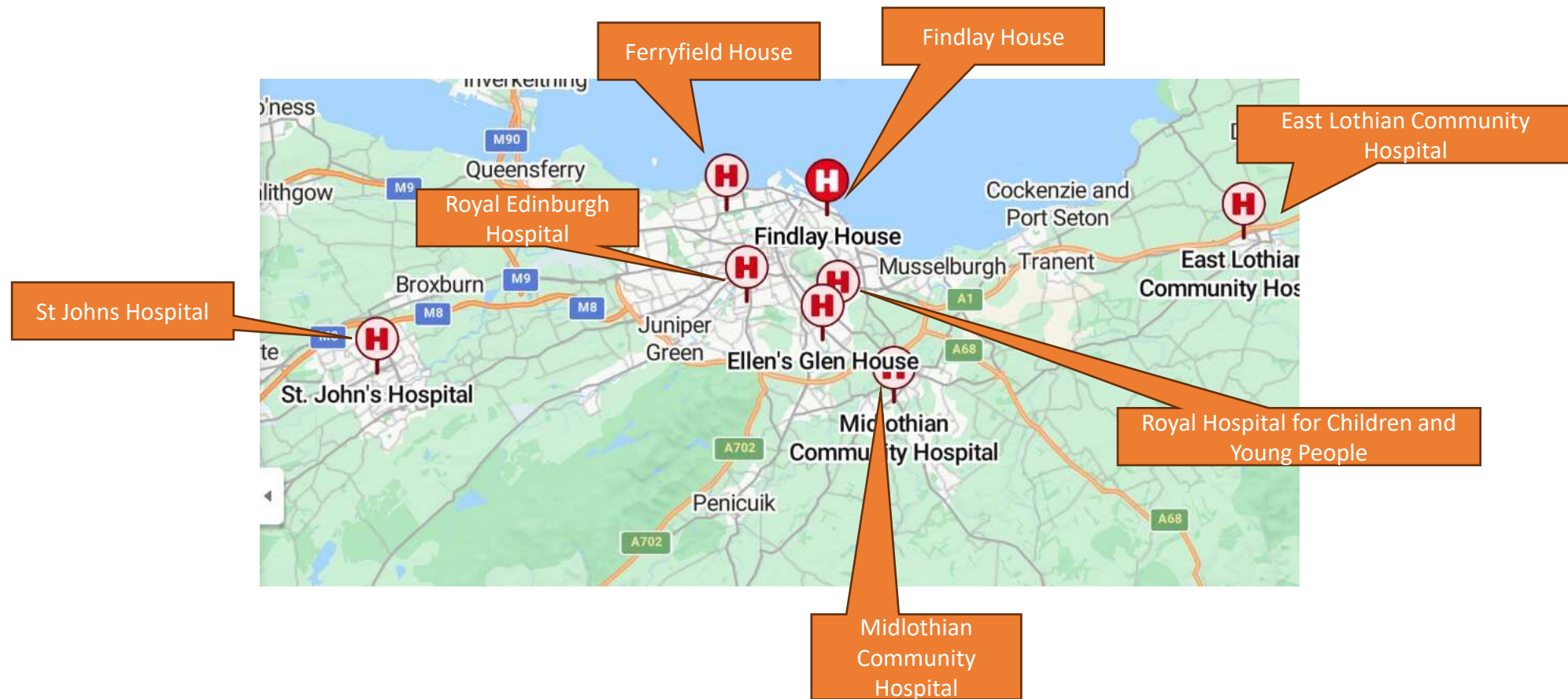
Ballenden House

Gracemount Medical Centre

Spittal Street



# NHS Lothian Hospital Locations



# NHS Lothian Community Locations





# NHS Lothian Prison Locations

