

**AGENDA FOR CHANGE
NHS JOB EVALUATION SCHEME**



JOB DESCRIPTION

1. JOB IDENTIFICATION

Job Title: Sleep Disordered Breathing Service – Staff Nurse

Reports to (insert job title): Advanced Nurse – Sleep Apnoea/NIV
Advanced Nurse – Respiratory Medicine **

Accountable to: Assistant Directorate Nurse Manager – Medical

Department, Ward or Section: Respiratory Assessment Unit

CHP, Directorate or Corporate Department: Medical

Job Reference: SSMEDDRAIGCHST09

No of Job Holders: 1

Last Update (insert date):

2. JOB PURPOSE

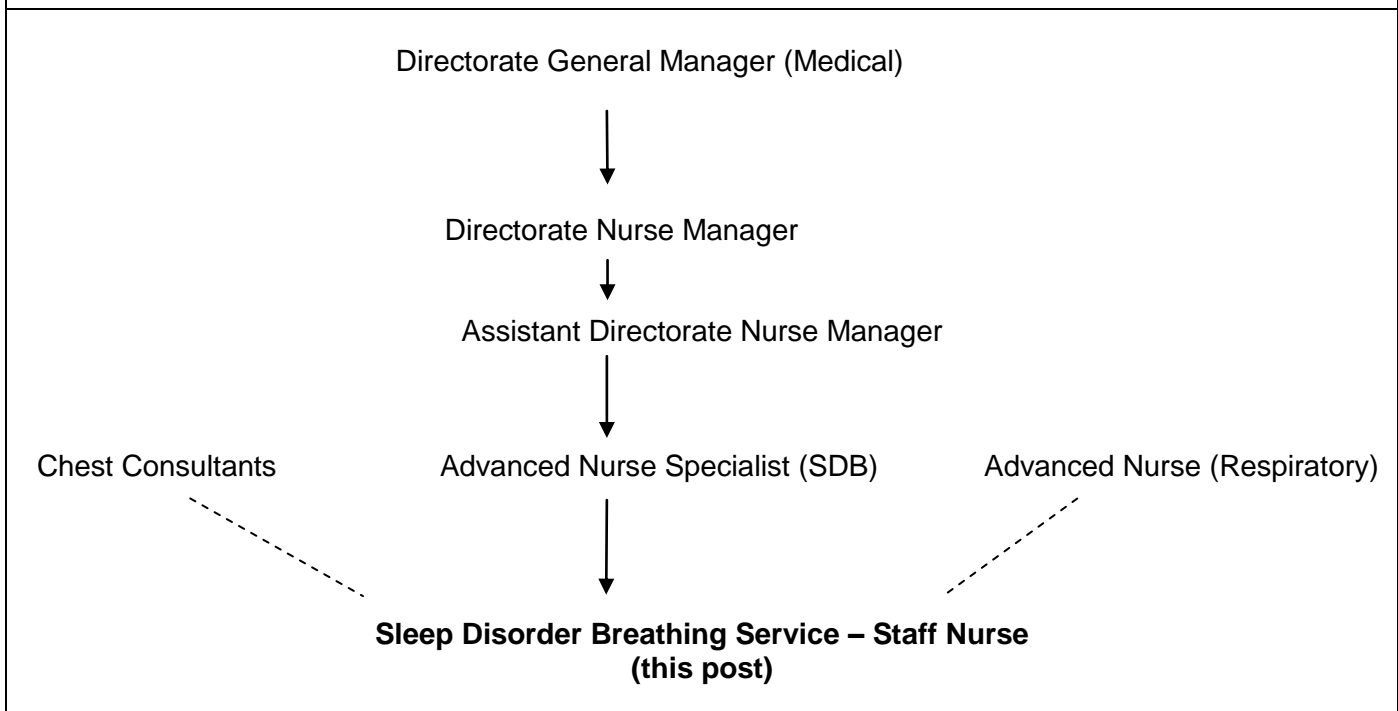
1. In conjunction with the advanced nurse, the sleep nurse will help to manage and develop the sleep related breathing disorders service.
2. To deliver high standard care to patients receiving Continuous Positive Airway Pressure (CPAP) or non invasive ventilation (NIV) in hospital and the community
3. Responsible for setting of programmes and standards of care for patients in hospital and the community
4. In conjunction with the Advanced Nurse, the staff nurse will assist with the care of patients receiving intervention for pleural effusions.
5. Responsible for setting standard of care and support to patients and community staff for patients with indwelling pleural catheter (IPC) in the community

3. DIMENSIONS

1. Assist in the management of the sleep disordered breathing service.
2. Elective admissions for investigation, diagnosis and treatment of Obstructive Sleep Apnoea Hypopnoea Syndrome (OSAHS), Obesity Hypoventilation Syndrome (OHS), Cheyne Stoke Respiration (CSR)
3. Sleep studies in community
4. Support to patients on CPAP and NIV admitted to other wards or hospitals or in Ward 7a.

5. Continued support in the community to assess effective treatment aiming at an independent quality of life preventing hospital admission.
6. Infection control issues for masks and ventilators
7. Provide specialist information and advice to trained nurses and patients carrying out studies
8. Ordering CPAP machines, Bi-level ventilators and mask accessories
9. Assist in collating expenditure on equipment used for patients from Grampian and Western Isles
- 10 Assist in the management of patients with pleural effusions
11. Continued support in the community to assess effective IPC care aiming to improve quality of life thus preventing hospital admission

4. ORGANISATIONAL POSITION



5. ROLE OF DEPARTMENT

1. The department provides a sleep disordered service for diagnosis / treatment of Obstructive Sleep Apnoea Hypopnoea syndrome and sleep disordered breathing conditions.
2. Provide a high quality, safe and supportive environment in order to care for patients on CPAP, NIV and Oxygen therapy in the community, meeting their identified treatment needs and equipment supervision and service at nurse led clinics and home visits.
3. Providing up to date evidence based guideless for the provision of NIV in acute respiratory failure within Raigmore Hospital.

6. MAIN TASKS, DUTIES AND RESPONSIBILITIES

1. Work as practitioner within the statues and guidelines laid down by NMC implements and audits standards of clinical care to promote and apply evidence based practice.
2. Demonstrates developed specialist nursing knowledge such as programming of equipment to allow assessment of sleep studies, diagnosis of OSAH's commencing treatment with CPAP or BI level therapy
3. ABG sampling, interpretation and assessment for treatment requirement parameters to deliver optimum treatment
4. Fitting and sizing of most appropriate mask system
5. Involves patients and carers in development care package
6. Ensure appropriate documentation is maintained
7. Provide support, advice, written and verbal information to patients and carers
8. Giving knowledge required to help them cope with their condition and treatment
9. Help to maintain cover and assistance 24 hour 7 day support for patients on ventilation in the community
10. Arranging home studies and educating patients on how to carry them out
11. Nurse led clinic (Raigmore and Peripheral) to follow up patients
12. Demonstrates developed specialist nursing knowledge such as

7a. EQUIPMENT AND MACHINERY

Knowledge of all equipment used for diagnosis and titration of treatment training staff on equipment.
Training staff on equipment:

- Nox T3 diagnostic devices x 4
- Automatic Positive Airway Devices x 50
- CPAP (x 1900)
- BIPAP/VPAP (x 170)
- Pulse oximeters x 4
- Mask systems and circuits
- Blood gas analyser
- TINA monitor
- IPC and rocket chest drains

7b. SYSTEMS

Maintain patients records in accordance with NMC guidelines and NHS standards
Correct use of computers systems, equipment, software for downloading studies, updating, and maintaining patient's information databases.

- E-Mail
- PowerPoint
- Word
- Excel database
- Remote monitoring system - Airview

8. ASSIGNMENT AND REVIEW OF WORK

1. Assists in effective management of sleep related breathing disorders service anticipates problems/need and resolves them involving appropriate colleague workload determined by needs of the service
2. Assists in care of insertion and management of chest drains
3. Responsible to Advanced Nurse for clinical guidance and formal appraisal of performance

9. DECISIONS AND JUDGEMENTS

1. Makes decisions, analysing and acting on information using knowledge, skills and experience of the service
2. Identify staff training requirements
3. Responsible for analysis of sleep study data, recognition of OSAHS from sleep study data, titration of CPAP and commencing patient treatment
4. Recognises own limitations in provision of clinical care and refers to the advanced nurse when appropriate

10. MOST CHALLENGING/DIFFICULT PARTS OF THE JOB

1. Managing demands of patient care within existing resources
2. Assisting to sustain the service, responding to and satisfying varying needs of patients, relatives and staff

11. COMMUNICATIONS AND RELATIONSHIPS

1. Establishes and maintaining professional relationships with nursing and medical colleagues both in hospital and community to provide planned co-ordinated seamless service for patients
2. Ensure effective communication with ward staff and patients
3. Maintains professional relationship with medical physics
4. Good negotiating, counselling and co-ordinating skills to deal with patient compliance in difficult circumstances

12. PHYSICAL, MENTAL, EMOTIONAL AND ENVIRONMENTAL DEMANDS OF THE JOB

1. Checking equipment, PC skills, annual calibration of machines, driving required for home visits and peripheral clinics and equipment transport
2. Coping with physical, social and spiritual demands of patients in respiratory failure and helping patients coming to terms with diagnosis and treatment
3. Concentration, decision making and organisational skills to cope with changing demands, answering and providing support to patient telephone calls and teaching staff, patients and carers

13. KNOWLEDGE, TRAINING AND EXPERIENCE REQUIRED TO DO THE JOB

1. Registered General Nurse
2. Minimum of 2 years post registration experience with at least 2 years in Respiratory Nursing experience.
3. Clinical experience with CPAP, NIV and patients with respiratory failure essential.
4. Sleep Disordered breathing training desirable
5. Evidence of further education / CPD
6. Evidence of team working and ability to use own initiative
7. Effective listening and interpersonal skills
8. Time management skills

14. JOB DESCRIPTION AGREEMENT

I agree that the above Job Description is an accurate reflection of my duties and responsibilities at the date of signing.

Job Holder's Signature:

Manager's Signature:

Date:

Date: