



**Eileanan Siar
Western Isles**

Healthcare Assistant Medical 1

Twitter
Facebook
Web

@NHSWI
facebook.com/NHSWesternIsles
wihb.scot.nhs.uk

Western Isles Health Board
The best at what we do



Job Advert



Medical Ward 1
HEALTHCARE ASSISTANT
Band 2 £19,609 to £21,615 pro rata
Plus Distant Islands Allowance £1117 pro rata
25 hrs per week
Permanent Contract

The above vacancy has arisen within Medical Ward 1.

Medical Ward 1 part of the Integrated Medical Unit, the ward deals with a wide range of acute medical conditions and has a designated 4 bedded High Dependency Area (HDA) and a 3 Bedded Paediatric area. The HDA provides facilities for patients requiring cardiac monitoring and invasive medical procedures and investigations. .

Applicants should be committed to providing a high standard of care and interact well within a multi-disciplinary team.

The successful applicant will be required to register with the Disclosure Scotland PVG Scheme (Protecting Vulnerable Groups Scheme). This post is not eligible for relocation expenses.

All NHS Western Isles vacancies appear on the NHS Scotland website: <https://apply.jobs.scot.nhs.uk/> along with a job description

For further information on this post please contact Sheila Harrison, Senior Charge Nurse 01851 704704 Ext 2320.

Any further queries please contact 01851 762027

1. JOB IDENTIFICATION

Job Title: Health Care Assistant

Department(s):Medical 1 Ward

Job Holder Reference:

No of Job Holders: 1

2. PURPOSE

To work in support of trained nurses in carrying out patient care activities and to report information relating to patients to Registered Nurses. The post holder will be expected to assist with other procedures and techniques under the guidance of trained nursing staff.

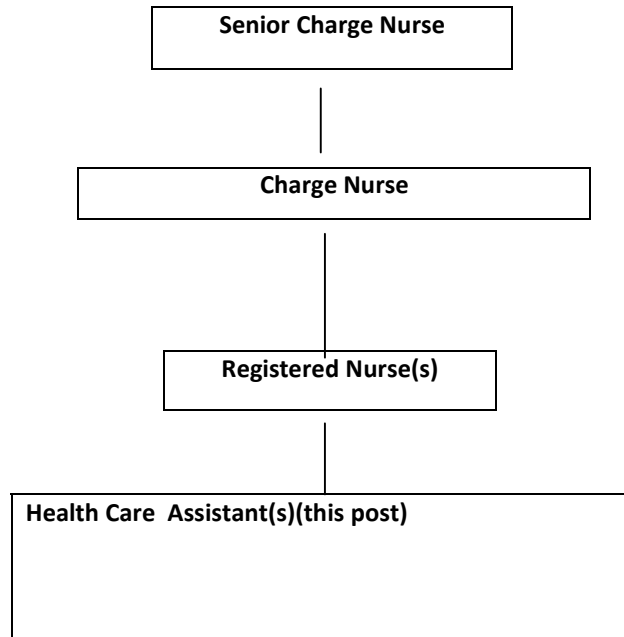
N.B In the event of NHS Scotland being placed on an 'Emergency Footing' and or NHSWI declaring a 'Major Incident', or similar critical service demand, the role will be subject to change based on the exigencies of the service and post holder competence.

JOB SUMMARY

As part of the multidisciplinary team the post-holder will carry out routine personal care duties for patients in support of, and supervised by a Registered Nurse.

The post-holder will carry out assigned duties; maintain hygiene, order and safety within the ward area.

3. ORGANISATIONAL CHART




4. MAIN DUTIES AND RESPONSIBILITIES OF THE POST

- In conjunction with Registered Nurses and within own competencies and confidence, undertake routine patient care duties in accordance with the care plan
- Understanding of ward procedures and routines.
- The ability to assess basic care needs of individual patients.
- Understanding of Infection Control; Health and Safety; Fire; Moving and Handling (including patient handling).

Clinical

- Understanding of ward procedures and routines.
- The ability to assess basic care needs of individual patients.
- Ability to undertake observations e.g. weights, heights, urinalysis and blood glucose monitoring (this entails lancing a finger to obtain a spot of blood to estimate sugar levels).
- Ability to recognise obvious changes in patient's general condition and report to registered nurse.
- Assess and maintain the safety of patients.
- Instigate emergency procedures by raising alarm.

- 
- Handles and records patient valuables and belongings e.g. Personal clothing and valuables, in accordance with ward policy.
 - Maintain and identify ward/department stock requirements.
 - Clean equipment including baths, sanitary aids, cupboards and other ward/departmental equipment in accordance with Western Isles NHS Board's infection control policy.
 - Report faulty equipment to registered nurse.
 - May be redeployed to other clinical areas.


Education and Research

- Participate and assist Registered Nurses in surveys or audits as required

Organisational

- Follows policies in own role and comments on policies as appropriate

Communication

- Document observations in patient care plan and relay information where appropriate.
 - Assists new members of staff into the role of health care assistant
- 

5. SUPPORTING EVIDENCE

Physical Demands of the Job

- On most shifts, frequent moving and handling patients and equipment, using mechanical aids.
- The requirement on most shifts, to move patients within the ward, to and from and between wards, theatre, x-ray and other departments.
- The requirement to move patients within the ward, to accommodate new admissions or to take cognisance of deterioration in a patient's condition that would necessitate moving the patient to a side room.
- The post-holder will on occasion have to manoeuvre heavy equipment (such as chairs, bedside cabinets etc) within the ward, in emergency situations e.g. during cardiac arrest.
- There will be occasions when a patient falls, or during emergency situations such as cardiac arrest, when the post-holder will have to move heavy patient without recourse.
- To mechanical aids and equipment. These manoeuvres may take place in confined spaces such as side rooms. The average weight of a man is 13-14 stones.

Mental Effort

- To apply the appropriate level of concentration required to perform all nursing duties and to provide safe and effective care.

Emotional Effort

- The Health Care Assistant will, on most shifts, participate in the care of seriously or terminally ill patients and their families.
- The Health Care Assistant will, occasionally, be involved in care under distressing situations while caring for angry patients and their relatives, or while caring for patients with challenging behaviour.
- The Health Care Assistant will, on most shifts, be involved in the care of patients/relatives receiving bad news.

Working Conditions

- Contact with body fluids throughout the shift.
- Possible aggressive behaviour of patients and visitors.

STANDARD ELEMENTS

Confidentiality

Comply with all approved NHSWI Policies and Procedures.

Comply with NHSWI Communication Strategy and Media Strategy.

This involves taking the necessary precautions when transmitting information only disclosing it to those who have the right and need to know it.

All personal health information is held under strict legal and ethical obligations of confidentiality.

NHS staff must follow guidance (NHS Code of Practice on Protecting Patient Confidentiality) before disclosing any patient information. All staff must respect confidentiality of all matters that they may learn relating to their employment, other members of staff, patients and their families.

Health and Safety:

Assist in maintaining own and others' health, safety and security.

This involves:

- a) Complying with Board health and safety policies, procedures and participating in mandatory training.
- b) Maintaining a safe working environment and reporting any issues of concern as appropriate.

NHS Western Isles attaches the greatest importance to the health and safety of its employees. It is the Board policy to do all that is reasonable to prevent personal injury and hazard to health by protecting staff and others including the public from foreseeable hazards compatible with the provision of proper services to patients. The Board expects its entire staff to take reasonable care of their own health and safety and that of others who may be affected by their acts or omissions at work. More detailed information is given in departmental safety policies where appropriate.

Ensure own actions support equality, diversity and rights.

This involves:

- a) Acting in ways consistent with the Board's policies and procedures.
- b) Treating those you come into contact with equitably and with respect.
- c) Recognising the need for aids or adaptations.

JOB DESCRIPTION AGREEMENT

I, (Print Name)..... confirm that the job description(s) /person specification(s) attached have been discussed with me and are an accurate and up-to-date account of the duties and responsibilities and skills/qualifications required to undertake the post.

Job Holder's Signature:

Date:

Head of Department Signature:Date:18.01.2021

NHS WESTERN ISLES - PERSON SPECIFICATION GUIDANCE

Job Title: Healthcare Assistant

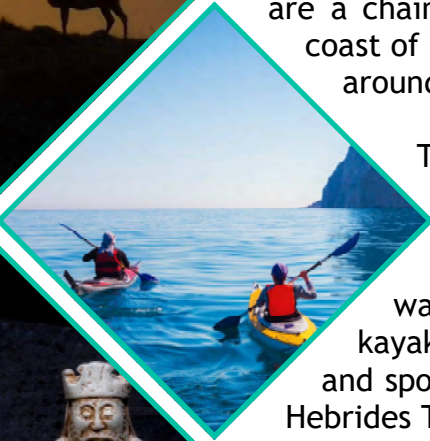
Department:

Location:

FACTOR	ESSENTIAL	DESIRABLE
EXPERIENCE		Experience in caring for people. Previous experience Working in clinical environment.
QUALIFICATIONS, TRAINING, RESEARCH PUBLICATIONS		SVQ2 Basic Life Support Training
KNOWLEDGE AND SKILLS	Numeracy and literacy. Willing to learn new skills and participate in training opportunities. Able to communicate effectively both verbally and written	Gaelic speaker IT literate Moving and Handling principles Understanding for Infection prevention and control standards
DISPOSITION	Able to work on own or as part of a team.	Non-judgemental
OTHER	Will rotate between day and night shifts. Driving licence	



The Western Isles, also known as the Outer Hebrides, are a chain of islands which lie 55km off the west coast of Scotland. The islands have a population of around twenty-seven thousand people.



Those who enjoy outdoor activities will find that the islands have a lot to offer. Outdoor pursuits such as horse riding, hiking, and fishing are popular, as are water sports such as canoeing, surfing, and kayaking. Further information about outdoor and sporting activities can be found on the Outer Hebrides Tourism Information website.



The local Council website provides information regarding schools, jobs, bus timetables, and opening times of the leisure centre.

The Board works in partnership with Hebridean Housing Partnership (HHP), which means that Key Worker Status will form part of their Housing Allocation Policy. For more information, please visit the HHP website.

If you have any specific queries regarding your move, please do not hesitate to contact your Line Manager, who will do their best to answer them.

Links

visitouterhebrides.co.uk
welovestornoway.com
hebrides-news.com
hebrideanhousing.co.uk
cne-siar.gov.uk

About NHS Western Isles

The Western Isles Health Board employs over one thousand members of staff, excluding GPs and Dentists. There are three main hospitals situated in the Western Isles:

Stornoway—Western Isles Hospital (Ospadal nan Eilean Siar)

Benbecula—Uist and Barra Hospital (Ospadal Uibhist agus Bharraigh)

Barra—St Brendan’s Hospital

There are a number of GP and Dental Practices across the Western Isles. Community nursing services operate out of general practice premises and at community offices in key locations.

There are only two medical practices in Stornoway: the Broadbay Medical Practice on Francis Street (tel 01851 703588) and the Group Practice on Springfield Road (tel 01851 703145). Both have a pharmacy attached to the practice for the dispensing of prescriptions.

Web

wihb.scot.nhs.uk

The latest information about the Board’s response to the COVID-19 pandemic can be found on the Board’s dedicated website.

Web

coronavirus.wi.nhs.scot



Transport Information

The islands are accessible from mainland Scotland by ferry or by plane (please note that both services can be affected in the winter).

There are three airports on the Western Isles: Stornoway Airport, Benbecula Airport, and Barra Airport. The following destinations can be reached from these airports:

Stornoway Airport—Benbecula, Edinburgh, Glasgow, Inverness, Manchester

Benbecula Airport—Glasgow, Inverness, Stornoway

Barra Airport—Glasgow

All flights to and from the Western Isles are operated by Loganair.

If you live in the Highlands and Islands region of Scotland, you can apply for cheaper air travel through the Air Discount Scheme. Further information on the discounts available can be obtained via the Air Discount Scheme website.

There are nine ferry ports operating in the Western Isles. Routes run between the islands, as well as to and from the mainland. All routes are operated by Calmac. Further information on the individual routes, including timetables and prices, can be obtained via the Calmac website.



Links

Ferry Travel:
calmac.co.uk

Air Travel:
loganair.co.uk

Car Hire:
carhire-hebrides.co.uk
lewis-car-rental.com

Air Discount Scheme:
airdiscountscheme.com