

Job Description

SECTION 1

JOB IDENTIFICATION	
Job Title:	Staff Nurse / Operating Department Practitioner
Department(s):	Theatres and Dental Suite within Woman's and Child Health (Division 3)
Location:	Royal Aberdeen Children's Hospital.
Hours:	Various Hours (Full Time & Part Time)
Band:	Band 5
Salary:	£30,229 – £37,664 per annum pro rata
Contract:	Permanent
Job Reference:	LJR171483
Closing Date:	5 th December 2023

SECTION 2

Job Purpose

The post holder participates as a member of the Multi-disciplinary team to plan, deliver and evaluate the highest possible quality of evidence /research based patient care.

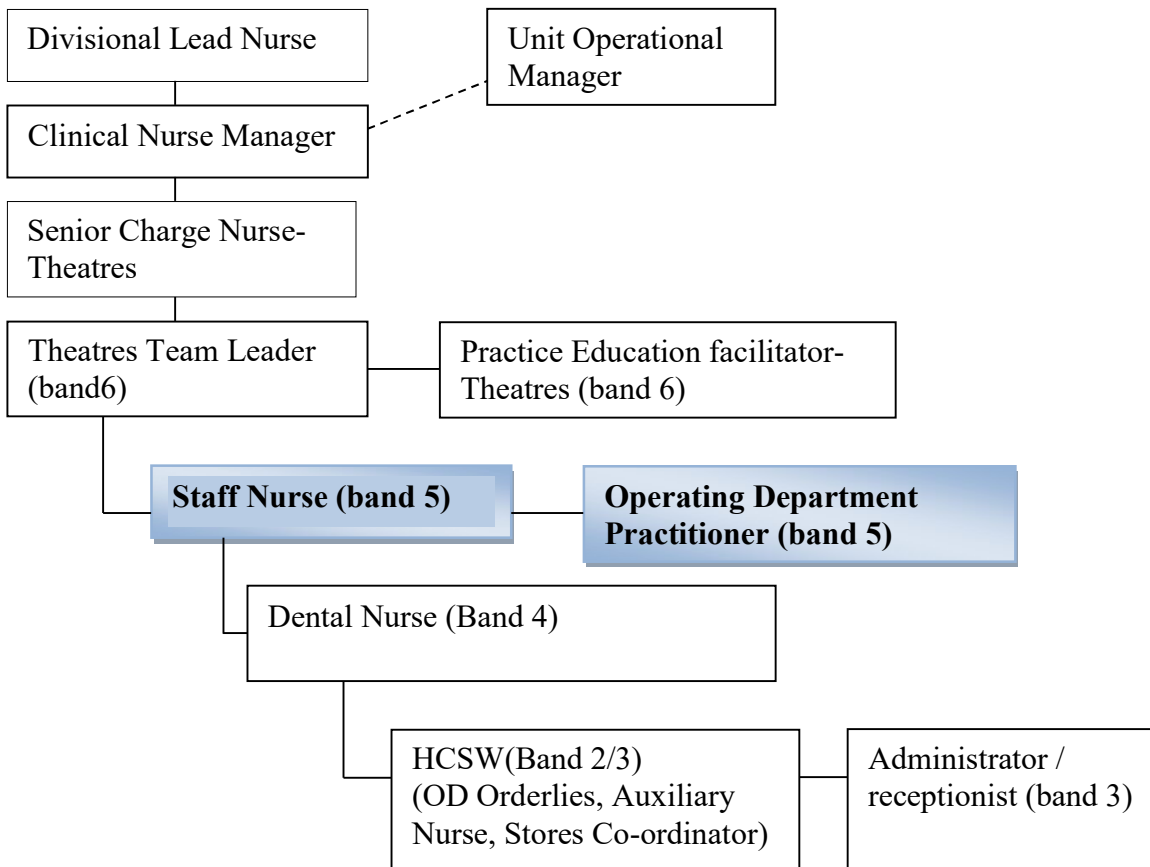
The post holder will contribute to the overall effectiveness of the department.

The post holder will at all times maintain a high standard of quality care for patients under going surgery throughout Woman’s and child health theatres.

The post holder may be required to take charge of the department in the absence of SCN/ team leaders.

The post holder will at times be required to assist in the Adult Dental Unit working with adults with special needs

Organisational Chart



SCOPE AND RANGE

To provide a high personal standard of patient care –
Assessment, planning, implementation and evaluation of clinical care pre, intra and post-operatively ensuring patient safety and dignity at all times.

Maintain accurate records that reflect planning, communication and management of care.

Carry out routine checks of surgical, electro-surgical and anaesthetic equipment, reporting any faults or defects.

Develop and demonstrate clinical expertise and knowledge in the roles of Anaesthetic Assistant and /or, Scrub and Circulating Practitioner and/or Recovery Room Nurse.

Be aware of and implement measures for the prevention of cross infection.

To actively encourage the ethos of the multi-professional team in all aspects of patient care, through flexibility, communication and professionalism.

Prioritise workload and effectively manage staff according to the needs of the service.

The post holder will be required to work across the theatre suites within woman's and child health (Division 3)

MANAGEMENT FUNCTION

Manage and maintain a safe clinical environment – take a lead in risk assessment and clinical risk management.

Ensure safe management of drugs in accordance with NHS Grampian policies and the law.

Be knowledgeable with regard to legal checks and issues that are pertinent to obstetric theatres.

Maintain effective communication in theatre, throughout the theatre suite and other wards within RACH along with other members of the multi-professional team.

Participate in the day-to-day organisation and assist senior staff in the smooth running of the clinical area.

Participate in generating staff rotas, motivation and induction of staff.

Practice and promote effective and efficient use of equipment and supplies within the clinical area.

Participate in NHS Grampian Health and Safety Management and Manual Handling arrangements.

Participate in development of NHS Grampian/local protocols and policies.

EDUCATION

Fulfil personal objectives and use reflective practice as part of continuing development.

Maintain and further develop clinical skills – participate in ongoing education/updating relevant to clinical areas through in-house or external study programmes.

Facilitate teaching programmes for all grades of staff within the clinical area.

Participate in mentorship and appraisal of newly appointed staff.

Assist with the orientation of newly appointed staff.

Supervise and support junior staff.

PROFESSIONAL DEVELOPMENT

Work within codes of practice and professional guidelines.

Further develop expertise in management and teaching skills.

Further develop expertise in assessment/appraisal of learners and junior staff.

Encourage and participate in research/audit within the clinical area.

SYSTEMS AND EQUIPMENT

Produce accurate records that reflect planning, communication and management in the care of patients undergoing varying routine and complex clinical procedures, often in emergency situations.

Assist in the collection of obstetric theatre statistics on a daily basis; which are collated and sent to the Information, Management and Technology Department once a month.

THEATRE EQUIPMENT

The list below is not exhaustive and the post holder will be expected to attend training on the use of departments equipment including;

- Preparation, care, maintenance, trouble shooting/reporting faults
- Theatre table and table attachments. Positioning devices (shoulder roll etc)
- Electrosurgical equipment
- Blood weighing scales
- Warming devices –warm touch, inditherm

- Moving and handling equipment (easy slide, pat slide etc)
- Sharps Bins, Clinical/Domestic waste bags, tissue disposal
- Sutures.
- Drapes
- X-ray equipment - Lead coats/ image intensifier/ computer systems

ANAESTHETICS

- Monitoring equipment (E.C.G, Blood pressure ,SaO2)
- Invasive monitoring (C.V.P, Arterial)
- Infusion devices and warmers
- PCAs/ NCA's
- Blood Glucose measuring
- Ultrasound
- Nerve stimulator
- Patient warming devices(Inditherm, bear hugger)
- Epidurals
- Intubation scopes and tubes
- Suction (portable and built in)
- Hot Cots
- Anaesthetic Machines
- Drug administration, preparation and storage (oral I.V, rectal, ointments, gaseous)
- Blood fridge

RECOVERY

- Thermometers
- Emergency nurse call systems
- In built Communication system
- Hospital bleep system
- Emergency equipment (Defib trolley, 1st line equipment, Fire equipment)

SURGICAL SPECIALITIES –

ENT, GI, General, Neurology, Orthopaedics, Max-Fax, Ophthalmology, Plastic, Thoracic, Oncology /Haematology.

- Preparation, care, maintenance, trouble shooting/reporting faults
- Surgical instrument sets
- Supplementary Surgical instruments
- Endoscopy equipment (nasal, bronchoscope)
- Microscopes/ surgical loops
- Drills
- Head lights
- Dressings /ointments/creams
- Implants (lens, middle ear)
- Laser
- Computerised equipment (QED machine, PAC'S machine Endoscopy trolley)
- Phaco

DECISIONS AND JUDGEMENTS

With support demonstrate the ability to assess and make decisions according to the urgency and/or complexity of a particular situation in a calm and professional manner.

Participate with others to organise staff, prioritise workload and implement day-to-day tasks when theatre sister not on duty.

Anticipate and respond appropriately to clinical emergencies and change in staffing skill mix.

COMMUNICATIONS AND RELATIONSHIPS

Communicate effectively and accurately with all members of the multi-professional team in situations ranging from straightforward routine procedures to complex clinical emergencies.

Communicate effectively and accurately with wards and nursing staff in clinical areas throughout RACH and the woman's and child health theatres.

Informative, reassuring and empathetic communication with patients and relative's pre, intra and post-operatively – these areas, in particular, can be emotionally demanding and distressing at times.

Be involved in training, motivation and support of less experienced staff members, including those from other disciplines.

Maintain effective communication with NHS Grampian departments and outside agencies regarding equipment maintenance and repair, stores and sterile services issues.

PHYSICAL/MENTAL DEMANDS OF THE JOB

Requirement of highly developed physical skills.

Ability to work in a sustained and focused manner.

Ability to make immediate decisions and problem solve in a concise and confident manner.

Manual handling of heavy/awkward machinery and theatre equipment.

Manual handling of patients who can have variety of anaesthesia on board and may be highly distressed.

Participate in invasive procedures. Exposure to all body fluids/blood borne pathogens.

Ergonomic Challenges

The post holder will encounter

- Prolonged wearing of lead protection.
- Requires a high level of concentration, good hand/eye co-ordination and stamina while in the work environment.
- Work with hazardous and infectious products and needs to be versed in the correct way to handle these substances and in the procedure to follow in event of a spillage occurs or an area is contaminated as laid down by COSHH. Substances include OPA, Formalin, Soda lime, Tristel.
- Required to provide a high standard of care and optimal use of the department facilities while working within the European Working time directive, and is required to work a variety of shifts e.g. Day shift, Day /Night on-calls.
- Required to cover a large departmental area during each shift.

PERSON SPECIFICATION

The Person Specification should meet the demands of the job and comply with current legislation. Setting unnecessary standards may, for example, unfairly discriminate against one sex, the disabled or minority racial groups. Applicants should be assessed in relation to their ability to meet the real requirements of the job as laid down in the job description. Shortlisted candidates **MUST** possess all the essential components as detailed below.

POST/GRADE: STAFF NURSE/OPERATING DEPARTMENT PRACTITIONER

LOCATION: RACH. WOMAN'S AND CHILD HEALTH

WARD/DEPARTMENT: RACH & DIVISION 3 THEATRES

The Person Specification should meet the demands of the job and comply with current legislation. Setting unnecessary standards may, for example, unfairly discriminate against one sex, the disabled or minority racial groups. Applicants should be assessed in relation to their ability to meet the real requirements of the job as laid down in the job description. With the exceptions relating to displaced and disabled candidates noted in Sections 5.3 and 5.4 of this policy, shortlisted candidates must possess all the essential components as detailed below.

GENERAL REQUIREMENTS

Factor	<u>Essential</u>	<u>Desirable</u>
Qualification & Experience	ODP Qualification NMC Registration Perioperative experience	Skilled in all aspects of theatre roles
Circumstances & flexibility	Flexible across a range of shift patterns to fulfil service requirements Able to participate in on call duties Ability to adapt to changing clinical situations and unpredictable work load	
Particular requirements of the post	Good interpersonal and communication skills Evidence of ongoing professional development	
Level of Disclosure check required	Enhanced	