

NHS Lothian Sites & Services

Royal Edinburgh Hospital



Situated to the South West of the city with good transport links to the city centre

Available Specialties:

PSYCHIATRIC SERVICES

Dementia

SPECIALIST SERVICES

Child & Adult Mental Health, Intensive Psychiatric Care Unit, Older Peoples Mental Health, Forensic Mental Health, Adult Acute Admissions Acute Inpatient Care, Traumatic Stress and Alcohol & Substance Misuse, Rehabilitation Complex Care

St John's Hospital



Situated in West Lothian with good public transport links to the City of Edinburgh

Available Specialties:

MENTAL HEALTH WARDS

Older People's Mental Health, Acute In-patient, Intensive Psychiatric Care Unit, Regional Mother and Baby Unit, Regional Eating Disorders Unit, Pentland Court

Prison Nursing

HMP Edinburgh



Situated in Edinburgh

HMP Addiewell



Situated in West Lothian

Available Specialties at both prisons:

Addictions team

Royal Hospital for Children & Young People



Situated on the south side of Edinburgh on a shared campus with the Royal Infirmary of Edinburgh with good public transport links to the City of Edinburgh

Available Specialties:

CHILD AND ADOLESCENT MENTAL HEALTH

CAMHS ID ITS, CAMHS over 12 day service

Ferryfield House



Available Specialties:

Willow ward -
Dementia (female)

Ferryfield House is situated in the North of Edinburgh with good transport links to the city centre

Ellen's Glen House



Available Specialties:

Thistle ward - Older
people's mental
health

Ellen's Glen House is located in South Edinburgh

Findlay House



Available Specialties:

Prospect bank ward -
Dementia (male)

Findlay House is located in North East Edinburgh, in Leith

Maple Villa



Available Specialties:

Older Adults Mental Health unit for males with Dementia



Situated in Craigshill in West Lothian

Tippethill Hospital



Situated in Bathgate in West Lothian

Available Specialties:

Older Adults Mental Health unit for females with
Dementia – Rosebury Ward

Midlothian Community Hospital



Situated to the south-east of Edinburgh in Dalkeith



Available Specialties:

Dementia Assessment and
HBCC – Penny Lane Ward

Mental Health Assessment –
Rose Lane Ward

Robert Fergusson Unit



Situated to the south west of the city with good transport links to the city centre

Available Specialties:

The Robert Fergusson Unit at the Royal Edinburgh Hospital focuses on Brain Injury Rehabilitation

East Lothian Community Hospital



Available Specialties:

Older Adults Mental Health

Intensive Home Treatment Team

Community Mental Health Team

Substance Misuse Team – Based in Musselburgh



Situated to the east of Edinburgh in Haddington

Health & Social Care Partnerships



Available Specialties:

EDINBURGH HSCP

WEST LOTHIAN HSCP

MIDLOTHIAN HSCP

EAST LOTHIAN HSCP

There are four Health & Social Care Partnerships within NHS Lothian that provide learning disabilities, adult and older adult community mental health, primary care, thrive and substance use services throughout Edinburgh, West Lothian, Mid & East Lothian

Edinburgh HSCP Community Mental Health

EHSCP has 4 localities where our Community adult and older adult community mental health, thrive and substance use services are located.

NW

Craigroyston Health Clinic

NW Locality Office, West Pilton Gardens

SW

Cambridge Street

Westerhailes Healthy Living Centre

Astley Ainslie Hospital

NE

Inchkeith House

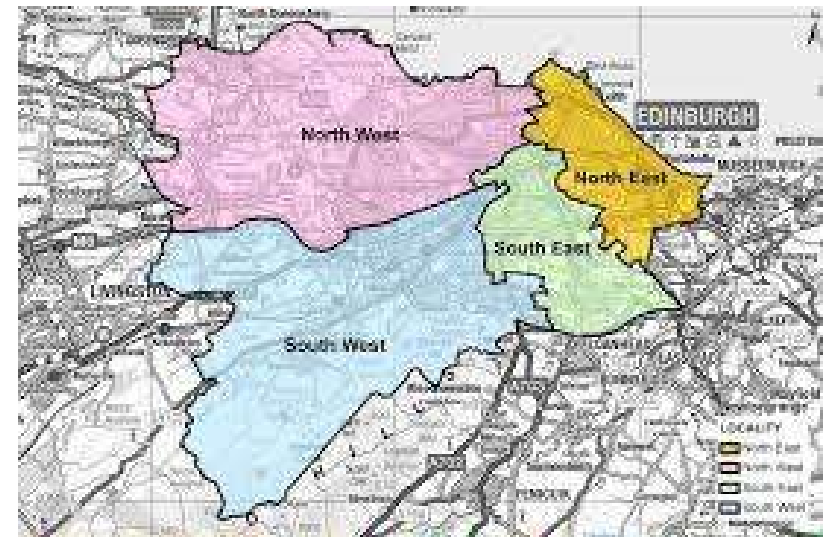
Leith Community Treatment Centre

SE

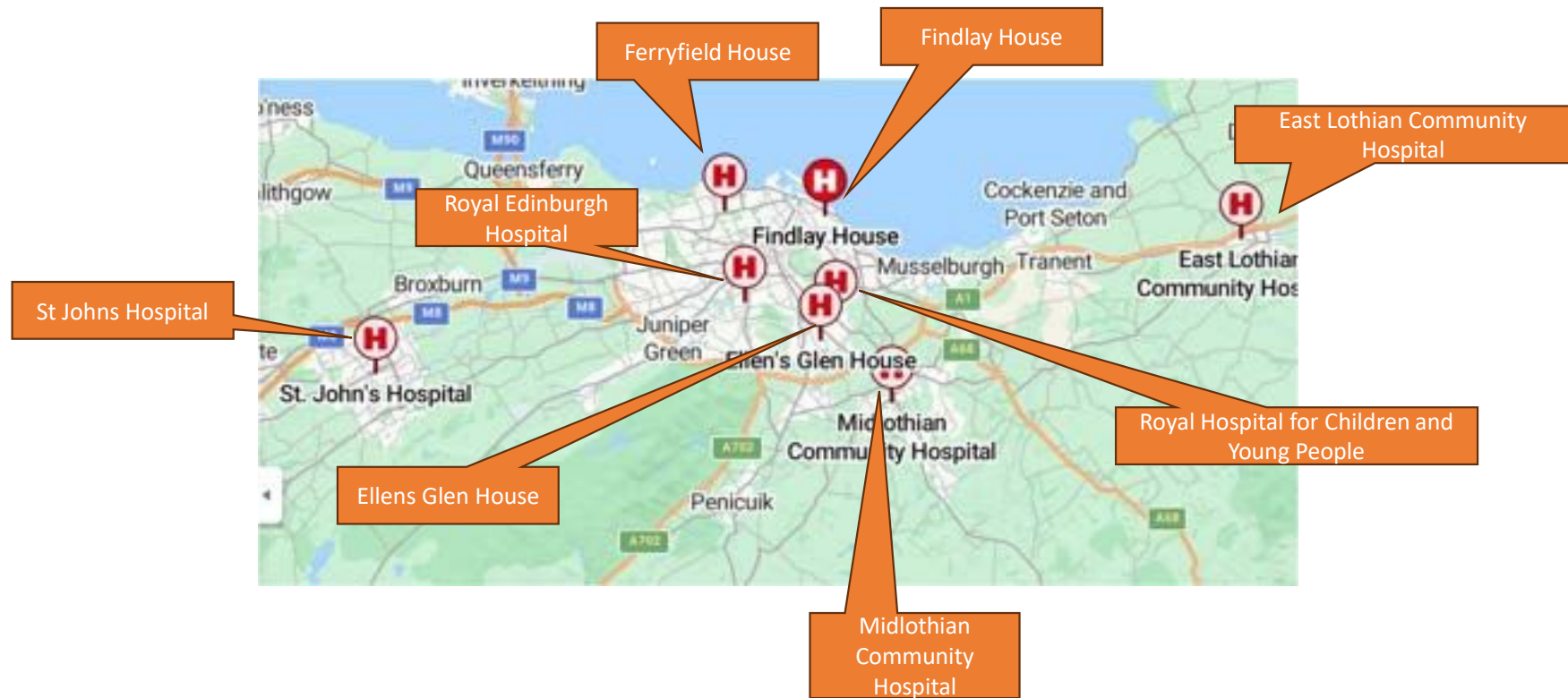
Ballenden House

Gracemount Medical Centre

Spittal Street



NHS Lothian Hospital Locations



NHS Lothian Community Locations





NHS Lothian Prison Locations

